



Promotional Branding Products

PRODUCT GUIDE



Plastic | Fabrication | Wire

INDEX

- 4 New Products
- 7 RotoTough
- 25 ACM Carts
- 39 Grab & Go
- 49 Refrigeration
- 51 Racks & Stackers
- 55 Grizzly



COMING SOON



NEW Super Arctic

DIMENSIONS

Length: 60.5" Width: 32" Height: 40.875" (92" w/header)

FEATURES

- Durable RotoTough™ construction
- Dual 2" drains w/garden hose fitting
- Large capacity - 455 quarts
- Sliding locking lid
- Integrated serving shelf
- Mold-in divider for easy separation
- Interchangeable graphics
- Never flat casters
- Easy to assemble header

CAPACITY

- 720 - 12 oz cans
- 560 - 16 oz cans
- 384 - 20 oz bottles
- 324 - 24/25 oz bottles
- 440 quarts



COMING SOON



ICE COLD
BEVERAGES

Removable
Header

ICE COLD
BEVERAGES

ICE COLD
BEVERAGES

NEW Arctic

DIMENSIONS

Length: 54" Width: 28.625" Height: 40.875" (94.5" w/header)

FEATURES

- Durable RotoTough™ construction
- Dual 2" drains w/garden hose fitting
- Large capacity - 323 quarts
- Sliding locking lid
- Integrated serving shelf
- Mold-in divider for easy separation
- Interchangeable graphics
- Never flat casters
- Easy to assemble header

CAPACITY

- 448 - 12 oz cans
- 336 - 16 oz cans
- 196 - 20 oz bottles
- 196 - 24/25 oz bottles
- 288 quarts



ICE COLD
BEVERAGES

ICE COLD
BEVERAGES

NEW

ROTOTOUGH

CARTS

GRAB & GO

BREEZERS

RACKS

GRIZZLY

CUSTOM



Package Trike

DIMENSIONS

Length: 88" Width: 26" Height: 45.5"

FEATURES

- Interchangeable graphics
- Dual sided stainless steel lid
- Umbrella mount
- Locking storage compartment
- Powder coated metal frame

CAPACITY

- 147 - 12 oz slim cans
- 120 - 12 oz cans
- 90 - 16 oz cans
- 70 - 20 oz bottles
- 70 - 24/25 oz cans
- 100 quarts



Draft Trike

DIMENSIONS

Length: 88" Width: 26" Height: 56.5"

FEATURES

- Interchangeable graphics
- Dual spigot draft tower
- Umbrella mount
- Locking storage compartment
- Insulated Iced-down coil bin w/lid
- 14" Drip tray
- 11 Gallon reservoir tank

CAPACITY

- 2 - 1/6 kegs



ROTOTOUGH™

The IRP RotoTough™ product line encompasses double-walled rotationally molded plastic products with interior foam insulation. This product line is intended to chill, preserve, and promote your beverage through the use of ice. Hallmark features of this line include extreme durability and longevity... many units in the field are still in use 10-15 years after purchase. If you need a no-fuss portable workhorse with optimal ROI, the RotoTough™ line is the ideal choice.



DURABLE
CONSTRUCTION



MADE IN
THE USA



IN-HOUSE
BRANDING
& GRAPHICS





Rear Drain



Counter-Top Series

Chiller

DIMENSIONS

Length: 36"
Width: 18"
Height: 8"

CAPACITY

- 74 - 12 oz cans
- 74 - 16 oz cans
- 60 - 20 oz bottles
- 55 - 24/25 oz cans
- 48 - quarts

FEATURES

- Large custom branding area
- Short reservoir depth for product visibility
- Rear drain for access water
- Durable RotoTough™ construction
- Foam insulated



Counter-Top Series

Maximizer

DIMENSIONS

Length: 16.75" Width: 17.7"
Height: 12.25"

FEATURES

- Custom branding areas
- Angled display for product visibility
- Rear drain for access water
- Durable RotoTough™ construction
- Foam insulated

CAPACITY

- 24 - 12 oz cans
- 20 - 16 oz cans
- 20 - 20 oz bottles
- 16 - 24/25 oz bottles
- 24 quarts

Counter-Top Series

Icer Elite

DIMENSIONS

Dia. 17.5"
Height: 10"

FEATURES

- Interchangeable graphics
- Custom 360° branding
- Lightweight, uses less plastic
- Durable RotoTough™ construction
- Foam insulated

CAPACITY

- 28 - 12 oz cans
- 21 - 16 oz cans
- 19 - 20 oz bottles
- 18 - 24/25 oz bottles
- 22 quarts



Interchangeable Graphics



Ice Caddy I

DIMENSIONS

Length: 36.25" Width: 27"
 Height: 35"

FEATURES

- Optional graphics
- Durable RotoTough™ construction
- Foam insulated
- Folding/removable lid
- Drain for access water
- Mold-in handles

CAPACITY

- 320 - 12 oz cans
- 240 - 16 oz cans
- 177 - 20 oz bottles
- 177 - 24/25 oz bottles
- 232 quarts



Mold-in Handles



NSF *Custom graphics invalidate NSF certification.

Ice Caddy 100

DIMENSIONS

Length: 30.25" Width: 22.25"
 Height: 28.75"

FEATURES

- Optional graphics
- Durable RotoTough™ construction
- Foam insulated
- Collapsible lid
- Drain for access water
- 5" Casters

CAPACITY

- 135 - 12 oz cans
- 100 - 16 oz cans
- 64 - 20 oz bottles
- 64 - 24/25 oz bottles
- 84 quarts / 100 lbs of ice



Collapsible lid



Ice Hawk Elite

DIMENSIONS

Dia: 21.25" Height: 36"

FEATURES

- Interchangeable graphics
- Custom 360° branding
- Crystal clear lid
- Durable RotoTough™ construction
- Drain for access water
- Foam insulated
- Optional 2" Caster upgrade (1.5" Standard)

CAPACITY

- 106 - 12 oz cans
- 82 - 16 oz cans
- 60 - 20 oz bottles
- 52 - 24/25 oz bottles
- 72 quarts



Merch III

DIMENSIONS

Dia. 16.5" Height: 37.25"

FEATURES

- Interchangeable graphics
- Custom 360° branding
- Crystal clear lid
- Durable RotoTough™ construction
- Drain for access water
- Foam insulated
- Premium 1.5" Casters

CAPACITY

- 56 - 12 oz cans
- 42 - 16 oz cans
- 30 - 20 oz bottles
- 26 - 24/25 oz bottles
- 44 quarts



Iceberg

DIMENSIONS

Length: 21.5" Width: 16.5" Height: 33.75"

FEATURES

- Interchangeable graphics
- Mold-in rear handle
- Crystal clear lid
- Durable RotoTough™ construction
- Foam insulated
- Drain for access water
- 3" Casters

CAPACITY

- 88 - 12 oz cans
- 66 - 16 oz cans
- 46 - 20 oz bottles
- 42 - 24/25 oz bottles
- 64 quarts



Pushcart

DIMENSIONS

Length: 53.5" Width: 30" Height: 40"

FEATURES

- Interchangeable graphics
- Durable RotoTough™ construction
- Foam insulated
- Rear drain for access water
- Heavy duty 5" casters
- Mold-in handles and front Pole Insert
- Optional pole topper

CAPACITY

- 352 - 12 oz cans
- 153 - 24/25 oz bottles
- 261 - 16 oz cans
- 228 quarts
- 141 - 20 oz bottles



Ice Island

DIMENSIONS

Length: 80" Width: 35" Height: 35"

FEATURES

- Interchangeable graphics
- Durable RotoTough™ construction
- Foam insulated
- Slide-in dividers
- Removable/portable gray water reservoir

CAPACITY

- 360 - 12 oz cans
- 216 - 16 oz cans
- 216 - 20 oz bottles
- 216 - 24/25 oz bottles
- 320 quarts





Arctic

DIMENSIONS

Length: 50.5" Width: 24"
 Height: 38"

FEATURES

- Large Interchangeable graphics
- Durable RotoTough™ construction
- Foam insulated
- 2 - Separate 144 qt reservoirs
- Heavy Duty 5" Casters
- Mold-in handles and Pole Insert
- Locking lid
- Optional Pole Topper

CAPACITY

- 448 - 12 oz cans
- 336 - 16 oz cans
- 196 - 20 oz bottles
- 196 - 24/25 oz bottles
- 288 quarts



Mold-in Handles



Super Arctic

DIMENSIONS

Length: 60.5" Width: 31.5"
 Height: 38"

FEATURES

- Large Interchangeable graphics
- Durable RotoTough™ construction
- Foam insulated
- 2 - Separate 220 qt reservoirs
- Heavy Duty 10" Casters
- Mold-in handles and Pole Insert
- Locking lid
- Optional Pole Topper

CAPACITY

- 720 - 12 oz cans
- 560 - 16 oz cans
- 384 - 20 oz bottles
- 324 - 24/25 oz bottles
- 440 quarts



Pole Topper



NEW Super Arctic

DIMENSIONS

Length: 60.5" Width: 32" Height: 40.875" (92" w/header)

FEATURES

- Durable RotoTough™ construction
- Dual 2" drains w/garden hose fitting
- Large capacity - 455 quarts
- Sliding locking lid
- Integrated serving shelf
- Mold-in divider for easy separation
- Interchangeable graphics
- Never flat casters
- Easy to assemble header

CAPACITY

- 720 - 12 oz cans
- 560 - 16 oz cans
- 384 - 20 oz bottles
- 324 - 24/25 oz bottles
- 440 quarts



NEW Arctic

DIMENSIONS

Length: 54" Width: 28.625" Height: 40.875" (94.5" w/header)

FEATURES

- Durable RotoTough™ construction
- Dual 2" drains w/garden hose fitting
- Large capacity - 323 quarts
- Sliding locking lid
- Integrated serving shelf
- Mold-in divider for easy separation
- Interchangeable graphics
- Never flat casters
- Easy to assemble header

CAPACITY

- 448 - 12 oz cans
- 336 - 16 oz cans
- 196 - 20 oz bottles
- 196 - 24/25 oz bottles
- 288 quarts

Texas Icer

DIMENSIONS

Length: 48" Width: 24"
Height: 36"

FEATURES

- Interchangeable graphics
- Durable RotoTough™ construction
- Foam insulated
- Side drain for access water
- 2 Slide-in Dividers
- Lower Storage Shelf

CAPACITY

- 128 - 12 oz cans
- 112 - 16 oz cans
- 105 - 20 oz bottles
- 105 - 24/25 oz bottles
- 120 quarts



Side Drain



Texas Icer Jr.

DIMENSIONS

Length: 36" Width: 24"
Height: 34.25"

FEATURES

- Interchangeable graphics
- Durable RotoTough™ construction
- Foam insulated
- Side drain for access water
- 1 Slide-in Divider
- Lower Storage Shelf

CAPACITY

- 96 - 12 oz cans
- 74 - 16 oz cans
- 74 - 20 oz bottles
- 74 - 24/25 oz bottles
- 80 quarts



Frost Box

DIMENSIONS

Length: 35.75" Width: 24" Height: 34.625"

FEATURES

- Interchangeable graphics
- Durable RotoTough™ construction
- Foam insulated
- Drain for access water
- Slide-in divider
- 2" Casters

CAPACITY

- 144 - 12 oz cans
- 105 - 16 oz cans
- 77 - 20 oz bottles
- 77 - 24/25 oz bottles
- 96 quarts



Texas Tanker

DIMENSIONS

Length: 44.75" Width: 27.25" Height: 30.5"

FEATURES

- Interchangeable graphics
- Durable RotoTough™ construction
- Foam insulated
- Mold-in divider
- 5" Casters
- 2 - Separate 140 qt reservoirs w/drains

CAPACITY

- 436 - 12 oz cans
- 296 - 16 oz cans
- 224 - 20 oz bottles
- 168 - 24/25 oz bottles
- 280 quarts



Avalanche

DIMENSIONS

Length: 30.25" Width: 16" Height: 33.75"

FEATURES

- Interchangeable graphics
- Durable RotoTough™ construction
- Foam insulated
- Drain for access water
- Easy roll 1.5" casters
- Crystal clear lid and slide-in dividers

CAPACITY

- 160 - 12 oz cans
- 112 - 16 oz cans
- 72 - 20 oz bottles
- 72 - 24/25 oz bottles
- 112 quarts

Icefall

DIMENSIONS

Length: 25.5" Width: 16.07"
Height: 57.5"

FEATURES

- Interchangeable graphics
- Durable RotoTough™ construction
- Foam insulated
- Integrated reservoir tank w/drain
- Removable top lid for ice refills
- 2.625" Tilt-casters w/mold-in handle
- Optional wire clip chip rack

CAPACITY

- 24 - 16 oz cans
- 24 - 20 oz bottles
- 24 - 24/25 oz cans

Individual Branding

Handles for Moving

Ice Reservoir Lid



Visible Ice





Hawker Elite

DIMENSIONS

Length: 22.625" Width: 14.75" Height: 10"

FEATURES

- Custom graphics
- Durable RotoTough™ construction
- New and improved padded harness
- Quick attach & detach system
- Ergonomic curved back
- Lightweight, uses less plastic

CAPACITY

- 64 - 12 oz cans
- 45 - 16 oz cans
- 26 - 20 oz bottles
- 29 - 24/25 oz bottles

Multi-Hawker Elite

DIMENSIONS

Length: 23.125" Width: 17.875" Height: 7.375"

FEATURES

- Custom graphics
- Durable RotoTough™ construction
- New and improved padded harness
- Quick attach & detach system
- Ergonomic curved back
- Lightweight, uses less plastic
- Optional 3" divider insert

CAPACITY

- 32 - 12 oz cans
- 32 - 16 oz cans
- 24 - 20 oz bottles
- 24 - 24/25 oz bottles
- 20 - w/3" divider insert



Divider Insert



Super Cooler I

DIMENSIONS

Dia. 24.5" Height: 27"

FEATURES

- Custom graphics
- Durable RotoTough™ construction
- Foam insulated
- Premium 2" Casters
- Removable wheel base
- Optional party pump

CAPACITY

- 1 Half Keg



RotoTough™ Sideline Cart

DIMENSIONS

Length: 47.875" Width: 31.875" Height: 33.5"

FEATURES

- Custom graphics on front & side
- RotoTough™ construction
- 6" Casters
- Deep pull-out drawers
- Water runoff trough

- Wire drawer dowels
- Rear locking storage

CAPACITY

- 31" x 41" Serving Surface
- Supports 250 lbs



Drawer Dowels



Brew Box

DIMENSIONS

Length: 30.375" Width: 17.375" Height: 17.25"

CAPACITY

- 60 Quarts
- 2 - 100 ft 3/8" coils
- 2 - 20 ft 1/4" choke

FEATURES

- Durable RotoTough™ construction
- Custom branding available on lid & base
- 2" of polyurethane foam insulation
- Includes coupler assemblies: faucets, knobs, and shanks included
- Bearclaw™ latches
- Rope handles & non-slip rubber feet



Lid Graphic



No Insert

With Insert



Insert Lid



RotoTough™ Pub Table

DIMENSIONS

Dia. 35" Height: 41.875"

FEATURES

- Custom graphics on top and base
- Durable RotoTough™ construction
- Foam insulated
- 14.25" diameter bucket insert on top with cover and drain
- Powder coated steel tube base
- Indoor & outdoor use



Dual Recycle Container

DIMENSIONS

L: 35.75" W: 24" H: 34.625"

FEATURES

- Custom graphic areas on lid and base
- Durable RotoTough™ construction
- Choice of circle or rectangular holes
- Rounded lid to discourage placing objects on top
- Stackable base & lid design
- 50% recycled material construction

CAPACITY

- 2 - 40-45 Gallon bag



Recycle Container

DIMENSIONS

L: 21" W: 21" H: 41.239" w/Lid

FEATURES

- Custom graphic areas on lid and base
- Durable RotoTough™ construction
- Choice of circle or rectangular holes
- Rounded lid to discourage placing objects on top
- Wire Bag Holder Insert
- Stackable base & lid design
- 50% recycled material construction

CAPACITY

- 40-45 Gallon bag



Recycle Bin Can

DIMENSIONS

Dia.: 21" H: 35.75" w/Lid

FEATURES

- Custom 360° branding
- Durable RotoTough™ construction
- Circular hole for beverage containers
- Novelty Can look
- Removable lid

CAPACITY

- 60 Gallon bag



Recycle Bin I

DIMENSIONS

L: 22" W: 22" H: 39" w/Lid

FEATURES

- Custom graphic areas on lid & base
- Durable RotoTough™ construction
- Stackable base & lid design
- Rounded lid to discourage placing objects on top
- 50% recycled material construction
- Flat Lid option available

CAPACITY

- 60 Gallon bag



IPC-280

DIMENSIONS

Length: 53.5" Width: 26" Height: 96"

FEATURES

- Interchangeable graphics
- Durable rotomolded construction
- Foam insulated
- 2 - Separate 140 qt reservoirs w/drains
- Locking collapsible lid
- Mold-in handles
- 5" Casters

CAPACITY

- 448 - 12 oz cans
- 336 - 16 oz cans
- 196 - 20 oz bottles
- 196 - 24/25 oz bottles
- 280 quarts



ICC-1

DIMENSIONS

Length: 63.625" Width: 30" Extended Height: 96.125"

FEATURES

- Interchangeable graphics
- Durable rotomolded construction
- Foam insulated
- 2 - Separate 160 qt reservoirs w/drains
- 36 gallon drainage tank
- Retractable illuminated header w/down-lighting
- 6" Casters

CAPACITY

- 598 - 12 oz cans
- 428 - 16 oz cans
- 284 - 20 oz bottles
- 240 - 24/25 oz bottles
- 320 quarts

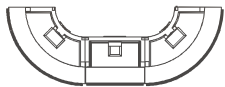


Universal Selling Station

If you can dream it, you can build it with the IRP Universal Ultimate Selling Station. Mix and match any option and create any size of selling station needed for your location, on or off premise. Customizing your Universal System is a quick and easy way to get the most use from your chosen unit. Our large optional canopy provides excellent shade for vendors, as well as shelter from the elements.

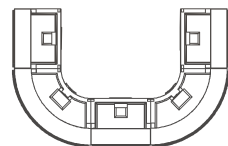
Universal 10 Piece w/Tent Shown

Layouts



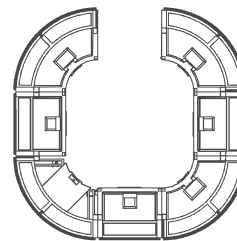
3 Piece

Length: 127.875" Width: 45.875"
Height: 91"



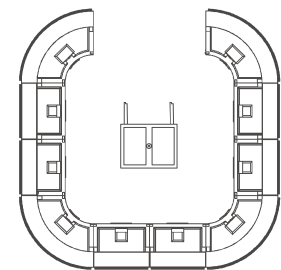
5 Piece

Length: 128" Width: 82"
Height: 91" (123.5" w/Tent)



7 Piece

Length: 128" Width: 128"
Height: 91" (123.5" w/Tent)



10 Piece

Length: 164" Width: 164"
Height: 91" (123.5" w/Tent)



Universal

Curve

DIMENSIONS

Length: 66" Width: 33" Height: 91"

FEATURES

- Large Interchangeable graphics
- Durable RotoTough™ construction
- Foam insulated
- Large reservoir w/divider & drain
- 13.5 gallon drainage tank
- Illuminated header w/down-lighting
- Optional locking lid

CAPACITY

- 452 - 12 oz cans
- 374 - 16 oz cans
- 240 - 20 oz bottles
- 212 - 24/25 oz bottles
- 280 quarts



Universal

Straight

DIMENSIONS

Length: 36" Width: 28" Height: 91"

FEATURES

- Large Interchangeable graphics
- Durable RotoTough™ construction
- Foam insulated
- Large reservoir w/divider & drain
- 16 gallon drainage tank
- Illuminated header w/down-lighting
- Optional locking lid

CAPACITY

- 336 - 12 oz cans
- 264 - 16 oz cans
- 170 - 20 oz bottles
- 156 - 24/25 oz bottles
- 200 quarts



Universal

Medium Support Cart

DIMENSIONS

Length: 36" Width: 28" Height: 36.25"

FEATURES

- Optional graphics
- Durable rotomolded construction
- Locking storage
- Umbrella mount
- 5" locking casters

PRECISION CARTS

IRP has significant experience in the design and fabrication of carts and kiosks in professional or collegiate sports venues, stadiums, arenas and resorts. IRP carts and kiosks can be created to your exact specifications, no cart is too big or small. All our carts can be designed with a combination of food & beverage serving options, or as mobile retail or P.O.S. stations.



COST EFFECTIVE
CONSTRUCTION



4 WEEKS
LEAD TIME



IN-HOUSE
BRANDING
& GRAPHICS



10" Box Header Package



10" Box Header Draft

Precision Series

10" Box Header

Draft

DIMENSIONS

Length: 86.5" Width: 25" Height: 91"

FEATURES

- 2 - 32" monitors
- Large Interchangeable graphics
- LED Down lighting
- Quiet, high efficiency refrigeration
- 2 stainless steel dual faucet draft towers
- 3.5 gallon overflow tank
- Marine board serving shelf w/theft guard
- 6" Casters

CAPACITY

- 4 - half kegs

Package

DIMENSIONS

Length: 94.5" Width: 36.5" Height: 87"

FEATURES

- 2 - 32" monitors
- Large Interchangeable graphics
- LED Down lighting
- 2 - 135 quart drop-ins
- 15 gallon water reservoir
- Marine board serving shelf w/theft guard
- 6" Casters

CAPACITY

- 456 - 12 oz cans
- 300 - 16 oz cans
- 180 - 20 oz bottles
- 180 - 24/25 oz cans



Precision Series

6" Box Header

Draft

DIMENSIONS

Length: 86.5" Width: 25"
Height: 92"

CAPACITY

- 4 - half kegs

FEATURES

- 32" monitor
- Custom CNC lettering available
- Large Interchangeable graphics
- LED Down lighting
- Quiet, high efficiency refrigeration
- 2 stainless steel dual faucet draft towers
- 3.5 gallon overflow tank
- Marine board serving shelf w/theft guard
- 6" Casters



Package

DIMENSIONS

Length: 94.5" Width: 36.5"
Height: 88.625"

CAPACITY

- 456 - 12 oz cans
- 300 - 16 oz cans
- 180 - 20 oz bottles
- 180 - 24/25 oz cans

FEATURES

- 32" monitor
- Custom CNC lettering available
- Large Interchangeable graphics
- LED Down lighting
- 2 - 135 quart drop-ins
- 15 gallon water reservoir
- Marine board serving shelf w/theft guard
- 6" Casters



Precision Series

K89 Header

Draft

DIMENSIONS

Length: 86.5" Width: 25"
Height: 92"

CAPACITY

- 4 - half kegs

FEATURES

- Arched latticed canopy
- Large interchangeable graphics
- Quiet, high efficiency refrigeration
- 2 stainless steel dual faucet draft towers
- 3.5 gallon overflow tank
- Marine board serving shelf w/theft guard
- 6" Casters



Package

DIMENSIONS

Length: 94.5" Width: 36.5"
Height: 88.625"

CAPACITY

- 456 - 12 oz cans
- 300 - 16 oz cans
- 180 - 20 oz bottles
- 180 - 24/25 oz cans

FEATURES

- Arched latticed canopy
- Large Interchangeable graphics
- 2 - 135 quart drop-ins
- 15 gallon water reservoir
- Marine board serving shelf w/theft guard
- 6" Casters



Casino Cart

DIMENSIONS

Length: 40.25"
Width: 24"
Height: 37.5

FEATURES

- ACM constructed base
- Stainless steel countertop
- Lockable door at either end of cart
- Stainless push handle
- Bumper and skirt around perimeter
- 2 Rigid 4" casters, 2 swivel locking casters
- Consumable ice bin w/stainless lid
- 22" Speed rail



Cocktail Push Cart

DIMENSIONS

Length: 48.75"
Width: 34.75"
Height: 38"

FEATURES

- ACM constructed base
- Stainless steel countertop w/recessed drop pan for liquor bottles
- 4 Slide out drawers
- Stainless push handle
- Bumper and skirt around perimeter
- 2 Rigid 4" casters, 2 swivel locking casters



CYK

DIMENSIONS

Length: 60.5" Width: 31" Height: 96"

FEATURES

- Interchangeable graphics
- Durable RotoTough™ construction
- Foam insulated
- 2 - Separate 120 qt reservoirs w/drains
- 3 Panel header
- Mold-in handles
- 6" Casters

CAPACITY

- 420 - 12 oz cans
- 296 - 16 oz cans
- 204 - 20 oz bottles
- 176 - 24/25 oz bottles
- 240 quarts



Package Elite

DIMENSIONS

Length: 62" Width: 32" Height: 91"

FEATURES

- Large interchangeable graphics
- Durable RotoTough™ construction
- Foam insulated
- 36 gallon drainage tank
- Illuminated header w/down-lighting
- 6" Casters

CAPACITY

- 612 - 12 oz cans
- 432 - 16 oz cans
- 292 - 20 oz bottles
- 280 - 24/25 oz cans
- 344 quarts



4 Keg Draft Elite

DIMENSIONS

Length: 84" Width: 25" Height: 95"

FEATURES

- Large interchangeable graphics
- Steel frame construction
- Quiet, high efficiency refrigeration
- 2 stainless steel dual faucet draft towers
- 3.5 gallon overflow tank
- Foam insulated
- Illuminated header w/down-lighting
- 6" Casters

CAPACITY

- 4 - half kegs



Precision Series

Craft Draft

DIMENSIONS

Length: 50.5" Width: 33.75"
Height: 92.625" w/header
 36.25" w/o header

FEATURES

- ACM constructed base
- Stainless steel rolled tube adjustable header
- Lockable doors
- Dual spigot draft tower
- 4" Casters
- Rubber Skirt With Bumper
- 11 gallon reservoir tank

CAPACITY

- 2 - Sixth Barrels
- 2 - Slim Quarter Barrels



32" P.O.S. CART

Length: 34.5" Width: 33.375" Height: 36.25"



48" P.O.S. CART

Length: 50.5" Width: 33.375" Height: 36.25"



Precision Series

P.O.S Carts

FEATURES

- Interchangeable graphic areas
- Stainless steel counter top
- Lockable storage
- Optional point of sale access port
- 4 Sizes to choose from
- Bumper and skirting
- 4" Casters

70" P.O.S. CART

Length: 72.5" Width: 33.375" Height: 36.25"



92" P.O.S. CART

Length: 94.5" Width: 33.375" Height: 36.25"





Precision Series

Bar Cart

DIMENSIONS

Length: 74" Width: 30.5"
Height: 45.25"

CAPACITY

- 160 - 12 oz cans
- 128 - 16 oz cans
- 74 - 20 oz bottles
- 74 - 24/25 oz cans
- 116 quarts

FEATURES

- 2 - 58 qt Consumable ice bins w/lids
- 2 - 14" Speed Rails
- Stainless steel counter-top
- 15 gallon reservoir tank
- Bumper & Skirting
- Marine board serving shelf
- 4" Casters
- Electrical option includes under-counter LED lights on both customer & server side
- Optional 20A P.O.S. receptacle
- Available in Black or Brushed ACM



NEW

ROTOTOUGH

CARTS

GRAB & GO

BREEZERS

RACKS

GRIZZLY

CUSTOM



Front View



Compartment View

Precision Series

Sink Cart

DIMENSIONS

Length: 33.5" Width: 33.375" Height: 42.375"

FEATURES

- 2.7 Gallon electric water heater
- 5 Gallon fresh water reservoir
- 8 Gallon gray water reservoir
- Soap dispenser
- 3 Gallon trash can
- Chrome towel dispenser
- Lockable storage
- Available in black or brushed ACM
- Optional graphics



Precision Series

Condiment Carts

48" Condiment Cart

DIMENSIONS

Length: 50.5" Width: 33.375" Height: 54.375"

FEATURES

- Server only condiment cart for prepackaged room temp condiments
- 4 - 4" Deep plastic third size food pans
- 8 - 4" Deep plastic sixth size food pans
- Lockable storage



70" Condiment Cart

DIMENSIONS

Length: 72.5" Width: 33.375" Height: 54.375"

FEATURES

- Server only condiment cart for prepackaged room temp condiments
- 4 - 4" Deep plastic third size food pans
- 8 - 4" Deep plastic sixth size food pans
- 2 Internal garbage receptacles
- Lockable storage



32" Condiment Cart

DIMENSIONS

Length: 34.5" Width: 33.375" Height: 54.375"

FEATURES

- Server only condiment cart for prepackaged room temp condiments
- 2 - 4" Deep plastic third size food pans
- 8 - 4" Deep plastic sixth size food pans
- Lockable storage



92" Condiment Cart

DIMENSIONS

Length: 94.5" Width: 33.375" Height: 54.375"

FEATURES

- Server only condiment cart for prepackaged room temp condiments
- 8 - 4" Deep plastic third size food pans
- 16 - 4" Deep plastic sixth size food pans
- Lockable storage



NEW

ROTOTOUGH

CARTS

GRAB & GO

BREEZERS

RACKS

GRIZZLY

CUSTOM



GRAB & GO

IRP's Grab and Go kiosk solution is the future of stadium and venue concession. Self-serve, directional vending combined with self-checkout eliminates personal interaction while providing efficient procurement of beverages for spectators.



COST EFFECTIVE
CONSTRUCTION

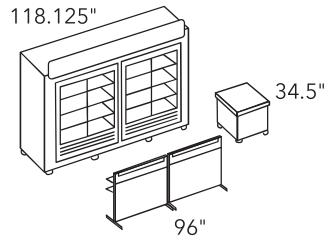


4 WEEKS
LEAD TIME



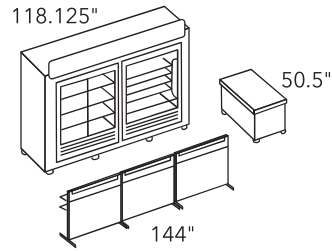
IN-HOUSE
BRANDING
& GRAPHICS





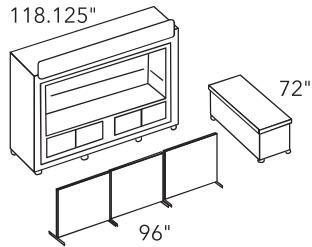
Layout #1

(2) 48" Crowd Corral w/rack
Double UR-2 | 32" P.O.S. Cart



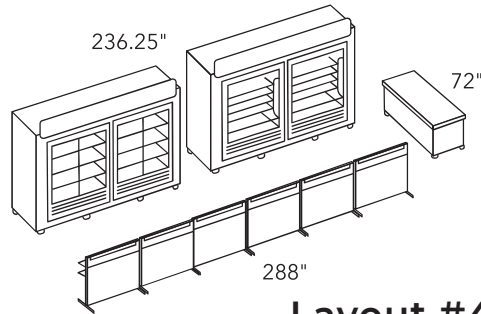
Layout #2

(3) 48" Crowd Corral w/rack
UR-2/Open Air | 48" P.O.S. Cart



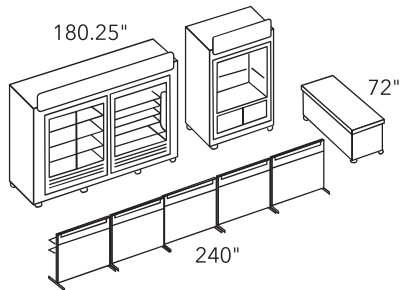
Layout #3

(3) 48" Crowd Corral
Merchandiser III | 72" P.O.S. Cart



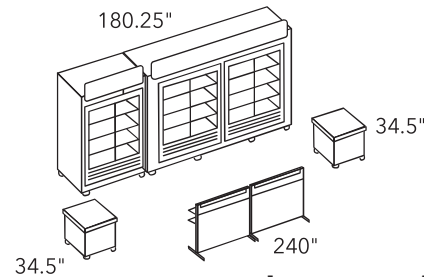
Layout #4

(6) 48" Crowd Corral w/rack
Double UR-2 | Double Open Air | 72" P.O.S. Cart



Layout #5

(5) 48" Crowd Corral w/rack
UR-2/Open Air | Merchandiser II | 72" P.O.S. Cart



Layout #6

(2) 48" Crowd Corral w/rack
UR-2 | Double UR-2 | 2x 32" P.O.S. Cart

Endless Configurations

IRP's Grab and Go can be designed in a multitude of layouts for the client depending on the space allocated, vending requirements, and quantity and size desired for the POS cart. The branded Crowd Corral is available with or without hanging racks for display of impulse snack products.

Grab & Go

Small Merchandiser

DIMENSIONS

Length: 40.125"
Width: 32.125"
Height: 95.625"

FEATURES

- Roll up RF40 metal door
- MCM slat wall on 3 interior sides
- 12 - 6" Peg hooks for hanging merchandise
- Locking lower storage area
- 4" Casters
- Durable steel construction
- Interior lighting

Grab & Go

UR-1

DIMENSIONS

Length: 40.125"
Width: 32.125"
Height: 100.125"

FEATURES

- Cyclopentane insulation
- Heavy duty wire shelves
- Electronic fan motors
- LED perimeter lighting
- Electronic thermostat
- Steel construction
- Interior lighting
- 4" Casters

CAPACITY

- 315 - 12 oz cans
- 315 - 16 oz cans
- 240 - 20 oz bottles
- 240 - 24/25 oz cans

Small Merchandiser



UR-1





Grab & Go

Medium Merchandiser

DIMENSIONS

Length: 62.125" Width: 32.125" Height: 95.625"

FEATURES

- Roll up RF40 metal door
- MCM slat wall on 3 interior sides
- 18 - 6" Peg hooks for hanging merchandise
- Locking lower storage area
- 4" Casters
- Durable steel construction
- Interior lighting



Grab & Go

UR-2

DIMENSIONS

Length: 62.125" Width: 32" Height: 100.125"

FEATURES

- Cyclopentane insulation
- Heavy duty wire shelves
- Electronic fan motors
- LED perimeter lighting
- Electronic thermostat
- Interior lighting
- 4" Casters

CAPACITY

- 630 - 12 oz cans
- 480 - 20 oz bottles
- 630 - 16 oz cans
- 480 - 24/25 oz cans



Grab & Go

Alpha 120

DIMENSIONS

Length: 62.125" Width: 32" Height: 100.125"

FEATURES

- OJEDA - ALPA 120
- Electronic thermostat
- 4" Casters
- Durable steel construction

CAPACITY

- 5 Shelves
- 23 cubic feet



Grab & Go

Large Merchandiser

DIMENSIONS

Length: 118.125" Width: 32" Height: 95.625"

FEATURES

- Roll up RF40 metal door
- MCM slat wall on 3 interior sides
- 27 - 6" Peg hooks for hanging merchandise
- Locking lower storage area
- 4" Casters
- Durable steel construction
- Interior lighting



Grab & Go

Double UR-2

DIMENSIONS

Length: 118.125" Width: 32" Height: 100.125"

FEATURES

- Cyclopentane insulation
- Heavy duty wire shelves
- Electronic fan motors
- LED perimeter lighting
- Electronic thermostat
- Interior lighting
- 4" Casters

CAPACITY

- 1,260 - 12 oz cans
- 1,260 - 16 oz cans
- 960 - 20 oz bottles
- 960 - 24/25 oz cans



Grab & Go

UR-2 / Alpha 120

DIMENSIONS

Length: 118.125" Width: 32" Height: 100.125"

FEATURES

- OJEDA - ALPA 120
- Cyclopentane insulation
- Heavy duty wire shelves
- Electronic fan motors
- LED perimeter lighting
- Electronic thermostat
- Interior lighting
- 4" Casters

CAPACITY

- 630 - 12 oz cans
- 630 - 16 oz cans
- 480 - 20 oz bottles
- 480 - 24/25 oz cans
- 5 Shelves
- 23 cubic feet



Grab & Go

Double Alpha 120

DIMENSIONS

Length: 118.125" Width: 32" Height: 100.125"

FEATURES

- OJEDA - ALPA 120
- Electronic thermostat
- 4" Casters
- Durable steel construction

CAPACITY

- 10 Shelves
- 47 cubic feet



Grab & Go

Triple UR-2

DIMENSIONS

Length: 118" Width: 32.375" Height: 100.687"

FEATURES

- Cyclopentane insulation
- Heavy duty wire shelves
- Electronic fan motors
- LED perimeter lighting
- Electronic thermostat
- Interior lighting
- 4" Casters

CAPACITY

- 1,890 - 12 oz cans
- 1,890 - 16 oz cans
- 1,440 - 20 oz bottles
- 1,440 - 24/25 oz cans



Grab & Go

P.O.S. Cart

DIMENSIONS

Length: 62.125" Width: 32.125" Height: 95.625"

FEATURES

- Interchangeable graphic areas
- Optional Roll up RF40 metal door
- Locking rear storage area
- 4" Casters
- Point of sale access port



Grab & Go

48" Crowd Corral

DIMENSIONS

Length: 48" Width: 16" Height: 48.125"

FEATURES

- Interchangeable graphic area
- Sturdy metal frame
- Plastic LDPE feet for grip
- Optional 2 or 3 shelf chip rack



Grab & Go

60" Crowd Corral

DIMENSIONS

Length: 48" Width: 16" Height: 59.75"

FEATURES

- Interchangeable graphic area
- Sturdy metal frame
- Plastic LDPE feet for grip
- Optional 4 shelf chip rack

Clearview

Set up your stop-and-shop-store anywhere with our new portable Clearview Grab & Go! These portable units can be set up anywhere and have limitless possibilities for use. Portability, locking security doors and durable construction make the Clearview Grab & Go the perfect option for any venue.



16' Enclosure

12' Enclosure

DIMENSIONS

Length: 161.125" Width: 157.125"
Height: 122.562"

FEATURES

- Header graphic
- Direct print ACM
- Breezer UR-2 with sliding doors and custom graphics
- Compact POS marine board-24
- Black PVC header sign
- Locking tambour roll up door

16' Enclosure

DIMENSIONS

Length: 213.5" Width: 157.125"
Height: 122.562"

FEATURES

- Header graphic
- Direct print ACM
- Breezer UR-2 with sliding doors and custom graphics
- Compact POS marine board-24
- Black PVC header sign
- Locking tambour roll up door

24' Enclosure

DIMENSIONS

Length: 318.25" Width: 157.125"
Height: 122.562"

FEATURES

- Header graphic
- Direct print ACM
- Breezer UR-2 with sliding doors and custom graphics
- Compact POS marine board-24
- Black PVC header sign
- Locking tambour roll up door



24' Enclosure

Customizable Merchandising

IRP's Grab N' Go products paired with the Acrylic Enclosure allows you to create the perfect layout for your merchandising needs.



Indoor use recommended
OPEN AIR ROOF



12' Enclosure

REFRIGERATION



CRG4 Counter-Top Fridge

DIMENSIONS

Length: 18.875" Width: 18.6875" Height: 33.5"

FEATURES

- Custom graphics available
- LED interior lighting
- Adjustable shelves
- High efficiency glass door with lock
- R-600a refrigerant
- Dual spring loaded product racks

CAPACITY

- 75 - 12 oz cans
- 50 - 24/25 oz cans
- 55 - 16 oz cans
- 3.5 cu. ft.
- 40 - 20 oz bottles



Breezer III

DIMENSIONS

Length: 33" Width: 25.75" Height: 33.5"

FEATURES

- Interior illumination
- Spring loaded product mechanism pushes product to the top
- Adjustable thermostat
- Fan assisted rapid cooling
- Minimum quantities may apply

CAPACITY

- 112 - 12 oz cans
- 112 - 16 oz cans
- 112 - 24/25 oz cans





UR-1

DIMENSIONS

Length: 27.375" Width: 29.5" Height: 78.75"

FEATURES

- Custom graphics
- 3" Casters
- LED interior lighting
- Electronic thermostat
- High efficiency glass door with lock
- Eco-friendly R134a refrigerant
- Adjustable wire shelves

CAPACITY

- 315 - 12 oz cans
- 315 - 16 oz cans
- 240 - 20 oz bottles
- 240 - 24/25 oz bottles



UR-2

DIMENSIONS

Length: 54.125" Width: 29.625" Height: 78.75"

FEATURES

- Custom graphics
- 3" Casters
- LED interior lighting
- Electronic thermostat
- High efficiency glass door with lock
- Eco-friendly R134a refrigerant
- Adjustable wire shelves

CAPACITY

- 630 - 12 oz cans
- 630 - 16 oz cans
- 480 - 20 oz bottles
- 480 - 24/25 oz bottles



UR-2 Sliding

DIMENSIONS

Length: 54.125" Width: 29.625" Height: 78.75"

FEATURES

- Custom graphics
- 3" Casters
- LED interior lighting
- Electronic thermostat
- High efficiency glass door with lock
- Eco-friendly R134a refrigerant
- Adjustable wire shelves

CAPACITY

- 630 - 12 oz cans
- 630 - 16 oz cans
- 480 - 20 oz bottles
- 480 - 24/25 oz bottles

RACKS & STACKERS

Optimized Merchandise Displays. IRP Product Displays are available in durable plastic or metal, depending on your needs and footprint. The IRP Wire Racks are an attractive solution to displaying bulk product quantities without sacrificing excessive floor space.

Interchangeable Rack

DIMENSIONS

Length: 24.5" Width: 17" Height: 46.5"

FEATURES

- Interchangeable graphics
- Double sided header
- Four flat wire shelves with price strip areas
- Powder coated steel frame
- 40 mm twin wheel casters

CAPACITY

- 32 - 6 pack bottles
- 24 - 12 pack cans
- 12 - 18 pack cans
- 8 - 30 pack cans



Signature Series

Mini Rack

DIMENSIONS

Length: 20"

Width: 11"

Height: 62"

FEATURES

- Interchangeable graphics
- Four flat wire shelves w/shelf strip areas
- Powder coated steel frame
- Upgraded heavy duty casters

CAPACITY

- 16 - 6 pack bottles
- 12 - 12 pack cans
- 8 - 18 pack cans
- 4 - 30 pack cans



5 Shelf Multi Rack

DIMENSIONS

Length: 16"

Width: 16"

Height: 74.5"

FEATURES

- Interchangeable graphics
- Double sided header
- Five flat steel shelves w/price strip areas
- Powder coated steel frame
- Product accessible on both sides
- 40 mm twin wheel casters
- Shelf: 9.25" x 14.5"

CAPACITY

- 75 - 12 oz cans
- 75 - 16 oz cans
- 30 - 4 pack slim cans
- 15 - 8 pack slim cans
- 10 - 6 pack bottles



Counter-Top Series

Mini Bottle Rack

DIMENSIONS

Length: 7.75"
Width: 6.375"
Height: 21"

FEATURES

- Clear acrylic construction for 360° product viewing
- Compact size
- Clear shelf dividers
- Removable front panel for optional security

CAPACITY

- 80 - 57ml bottles



Low Rider

DIMENSIONS

Length: 46.5"
Width: 10.5"
Height: 6.5"

FEATURES

- Interchangeable graphics
- Powder coated steel frame
- 40 mm twin wheel casters
- Available without casters

CAPACITY

- 30 - 12 pack cans
- 15 - 24 pack cans



Case-Stackers

FEATURES

- Custom graphics on front and side
- Durable RotoTough™ construction
- Sold in packs of 4
- Customizable layouts



Case-Stacker I

DIMENSIONS

Length: 16.5" Width: 11.5" Height: 4.5"

CAPACITY

- 12 oz 12 pk glass bottles - 6 pks, 2 per layer
- 12 oz fridge pk - 8 packs, 2 per layer
- 12 oz 12 pk - 10 pks, 2 per layer
- 12 oz 24 pk - 5 pks, 1 per layer
- 12 oz 30 pk - 6 pks, 2 per layer
- 16 oz 18 pk - 5 pks, 1 per layer
- Aluminum bottles 9 pk - 6 pks, 2 per layer

Case-Stacker II

DIMENSIONS

Length: 20.5" Width: 16.5" Height: 4.5"

CAPACITY

- 12 oz 12 pk glass bottles - 12 pks, 4 per layer
- 12 oz fridge pk - 24 pks, 4 per layer
- 12 oz 12 pk - 20 pks, 4 per layer
- 12 oz 24 pk - 10 pks, 2 per layer
- 12 oz 30 pk - 6 pks, 2 per layer
- 16 oz 18 pk - 8 pks, 2 per layer
- Aluminum bottles 9 pk - 12 pks, 4 per layer

Case-Stacker III

DIMENSIONS

Length: 32" Width: 16.5" Height: 4.5"

CAPACITY

- 12 oz 12 pk glass bottles - 18 pks, 6 per layer
- 12 oz fridge pk - 30 pks, 6 per layer
- 12 oz 12 pk - 30 pks, 6 per layer
- 12 oz 24 pk - 15 pks, 3 per layer
- 12 oz 30 pk - 12 pks, 4 per layer
- 16 oz 18 pk - 16 pks, 4 per layer
- Aluminum bottles 9 pk - 24 pks, 8 per layer

Grizzly®

The Grizzly name stands for durability, longevity, and reliability. At Grizzly, we pride ourselves on performance and strive to create the best coolers in the market. Our rotationally molded coolers are made by the enthusiast providing optimum performance for all adventures.

We have proudly envisioned, engineered, tested, and perfected our coolers in the U.S.A., our oath to you is **FOR A LIFETIME**. We stand by our products with a Lifetime Warranty and a Bear-Proof certification from the Inter-agency Grizzly Bear Committee.



DURABLE
CONSTRUCTION



MADE IN
THE USA



IN-HOUSE
BRANDING
& GRAPHICS



NEW

ROTOTOUGH

CARTS

GRAB & GO

BREEZERS

RACKS

GRIZZLY

CUSTOM

